

MDFL 3300 / 4000 DUAL FUEL BURNER

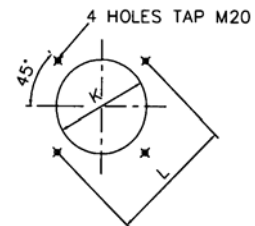
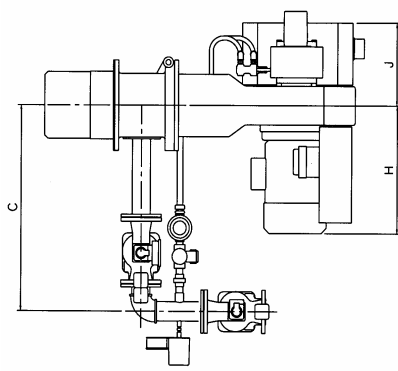
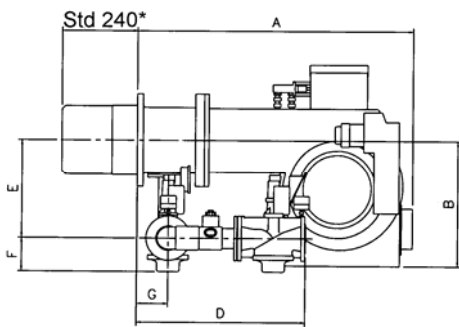
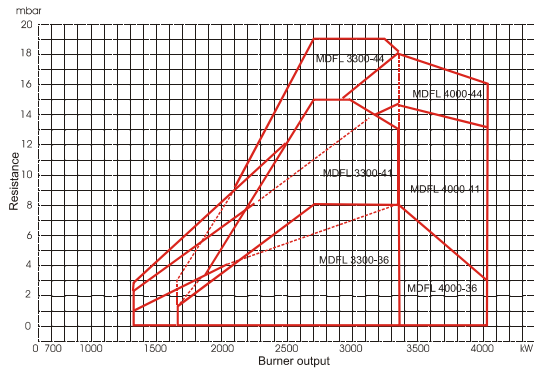
1350-4095 kW



- Designed and approved in accordance with the European Standard EN 267 and EN 676
- 2 stage or modulating gas/2 stage oil operation
- Plug-in contact facilitates the installation
- Available for natural gas, LPG, town gas, biogas
- Light or heavy oil
- Hinged flange

NU-WAY

Type		MDFL 3300	MDFL 4000
Capacity		1550-3367	1350-4095
Motor	V/Hz kW/A (Fuse)	400 / 50 36 - 7.5 / 3 x 40 HRC 41 - 11.0 / 3 x 40 HRC 44 - 15.0 / 3 x 50 HRC	400 / 50 36 - 7.5 / 3 x 40 HRC 41 - 11.0 / 3 x 40 HRC 44 - 15.0 / 3 x 50 HRC
Start/Run Current	Amps	36 - 101.3 / 17.3 41 - 97.0 / 25.3 44 - 123.6 / 32.9	36 - 101.3 / 17.3 41 - 97.0 / 25.3 44 - 123.6 / 32.9
Operation		2-stage Oil, Mod - Gas	2-stage Oil, Mod - Gas
Control unit		Landis	Landis
Max inlet pressure		300	300
Flame monitoring		UV cell	UV cell
Air damper motor		Landis	Landis
Leakage control		•	•
Gross weight		694	724
Volume		5.629	5.629



*Extended lengths available

Burner	A	B	C	D	E	F	G	H	J	K	L
MDFL 3300	1245	560	955	760	445	165	141	600	385	350	454
MDFL 4000	1245	560	925	760	410	165	141	600	385	350	454



Nu-way Limited
P O Box 1, Vines Lane
Droitwich
Worcestershire
WR9 8NA

tel: +44 (0) 1905 794331
fax: +44 (0) 1905 794017

email: info@nu-way.co.uk
web: www.nu-way.co.uk